

ECO LIVING VIBES

PRESENTS

GADGET GRAVEYARD GUIDE!

The Ultimate Guide to Ditching
Your Digital Clutter

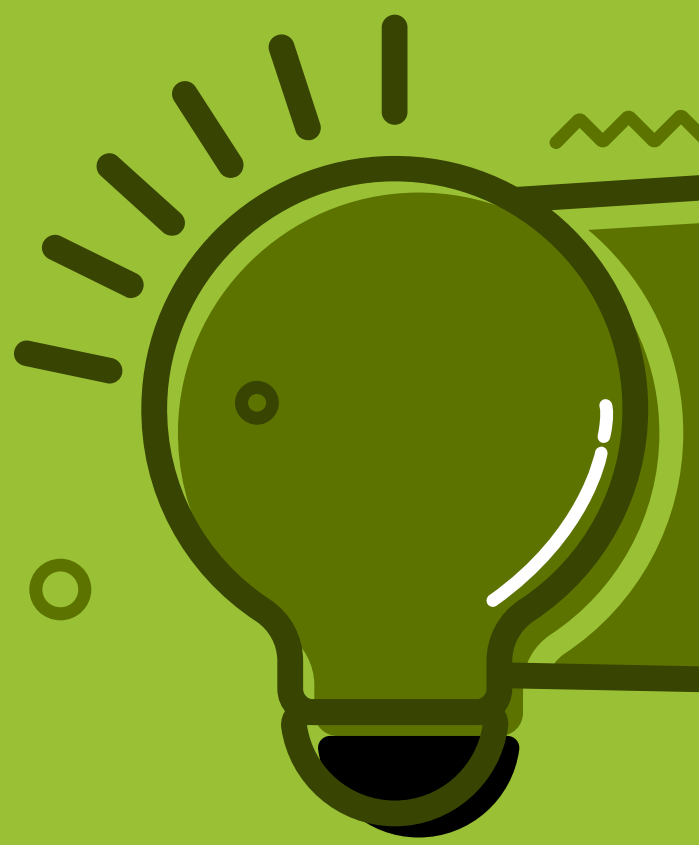


**ECO
LIVING
VIBES**

INTRODUCTION

Electronic waste, or e-waste, is a growing global problem. As technology advances, more and more electronic devices are becoming obsolete.

Improper disposal can lead to environmental and health hazards. This guide provides a comprehensive list of common electronic waste items and the proper ways to dispose of them responsibly.



THE IMPACT OF ELECTRONIC WASTE

GLOBAL E-WASTE GENERATION

The world generated approximately 57.4 million metric tons of electronic waste. That's the equivalent of 114,000 jumbo jets!

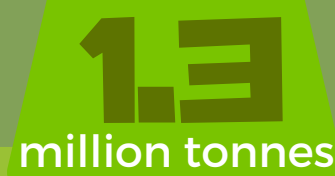


57
million tonnes



UK THROWS OUT 1.3M TONNES PER YEAR

About 1.3 million tonnes of electrical goods are thrown out in the UK every year, with only 38% being recycled. That's nearly 20kg for every man woman and child living in the UK.



1.3
million tonnes



38%



TOXIC SUBSTANCES

Electronic waste often contains toxic substances such as lead and mercury, which can cause pollution and health problems if not properly disposed of.

E-WASTE RECYCLING IN THE US

Over 75% of the materials in our old electricals can be reused. But the sad fact is only 35% is recycled. We still have a huge way to go!

75%



35%



THE PROBLEM OF UN-RECYCLED E-WASTE

At least 500,000 tonnes of electronic waste were thrown away, stolen, or hoarded in the UK, instead of being recycled



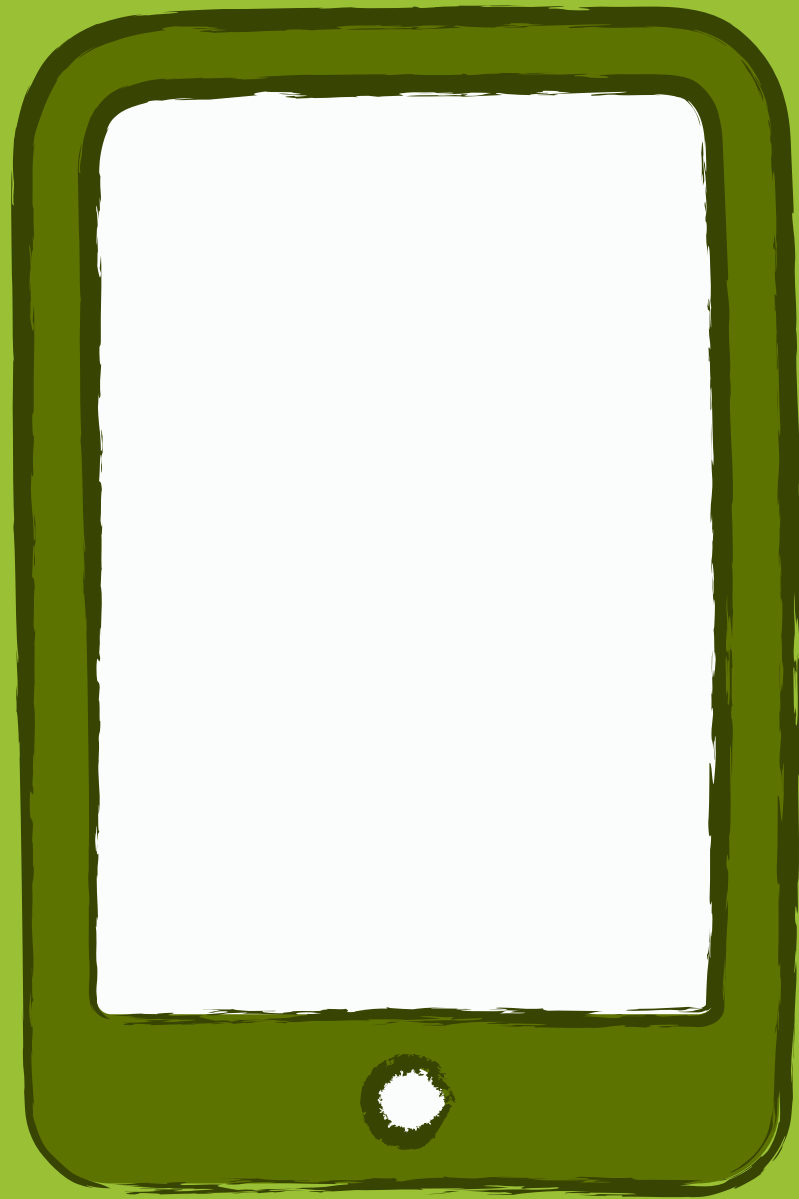
500
thousand
tonnes

ENVIRONMENTAL AND HEALTH BENEFITS

Recycling electronic waste helps protect the environment, human health, and puts valuable resources back into the economy



**ECO
LIVING
VIBES**



MOBILE PHONES & TABLETS

Proper Disposal Method:

- 1** Return to the manufacturer or retailer for recycling programs
- 2** Donate to local charities or organisations that accept working devices
- 3** Locate an e-waste recycling centre near you

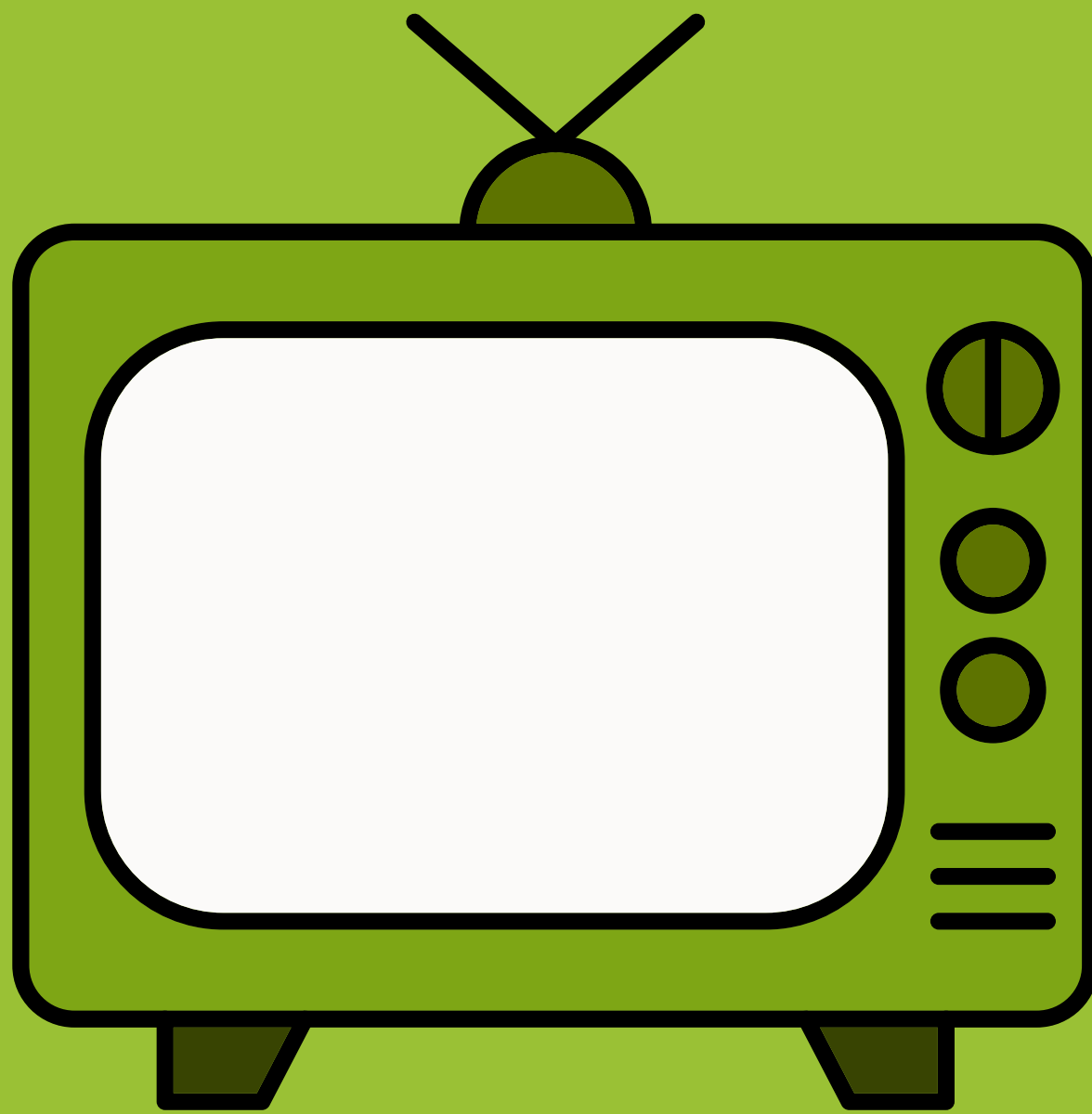


COMPUTERS

(DESKTOPS AND LAPTOPS)

Proper Disposal Method:

- 1** Wipe all personal data and bring to an e-waste recycling facility
- 2** Return to the manufacturer or retailer for recycling programs
- 3** Donate to schools, charities, or organizations that accept working devices

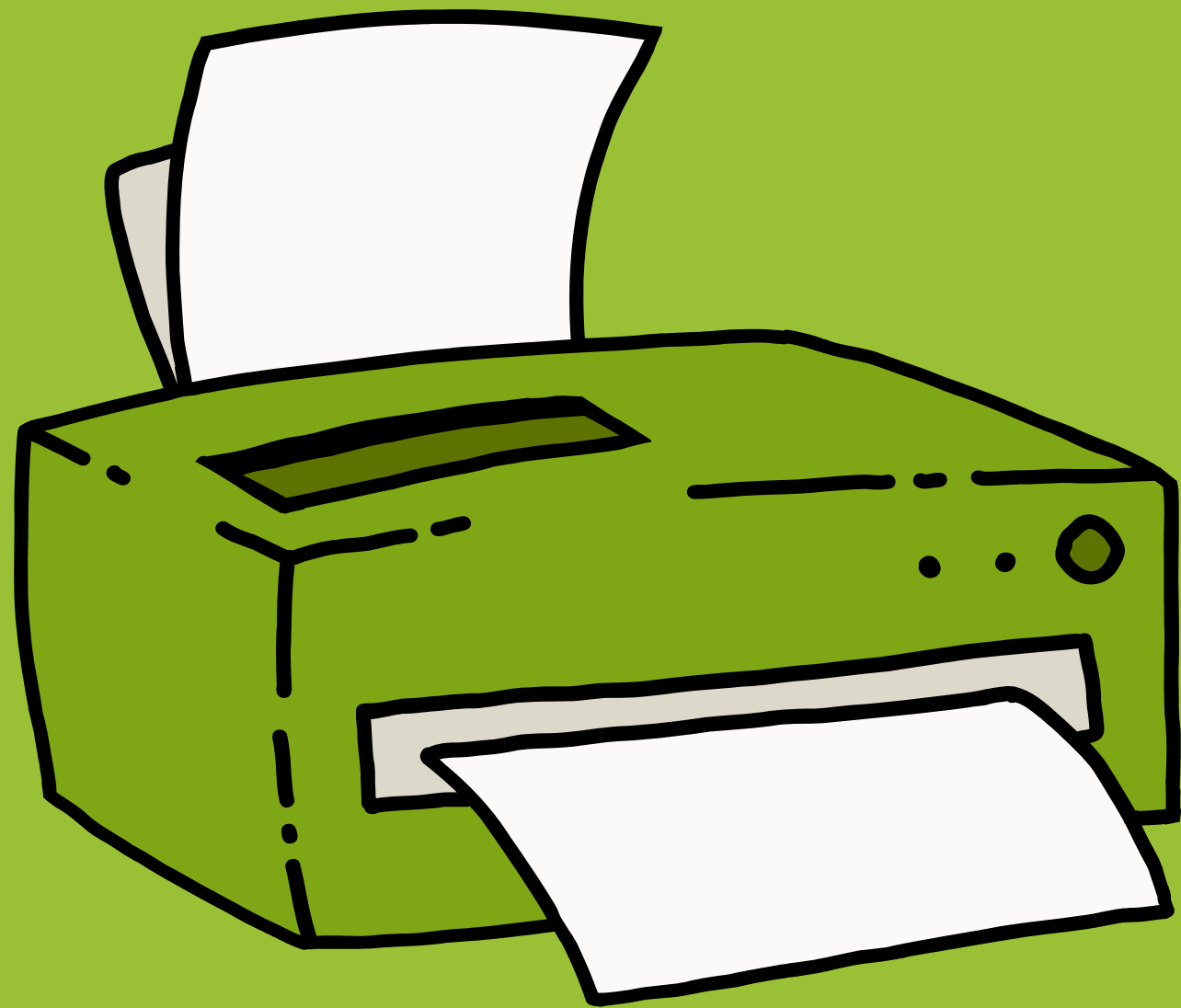


TELEVISIONS

(CRT, LCD, LED, PLASMA)

Proper Disposal Method:

- 1** Take to an e-waste recycling center that accepts TVs
- 2** Contact local waste management authority for proper disposal instructions



PRINTERS

SCANNERS, AND COPIERS

Proper Disposal Method:

- 1** Return to the manufacturer or retailer for recycling programs
- 2** Locate an e-waste recycling center near you

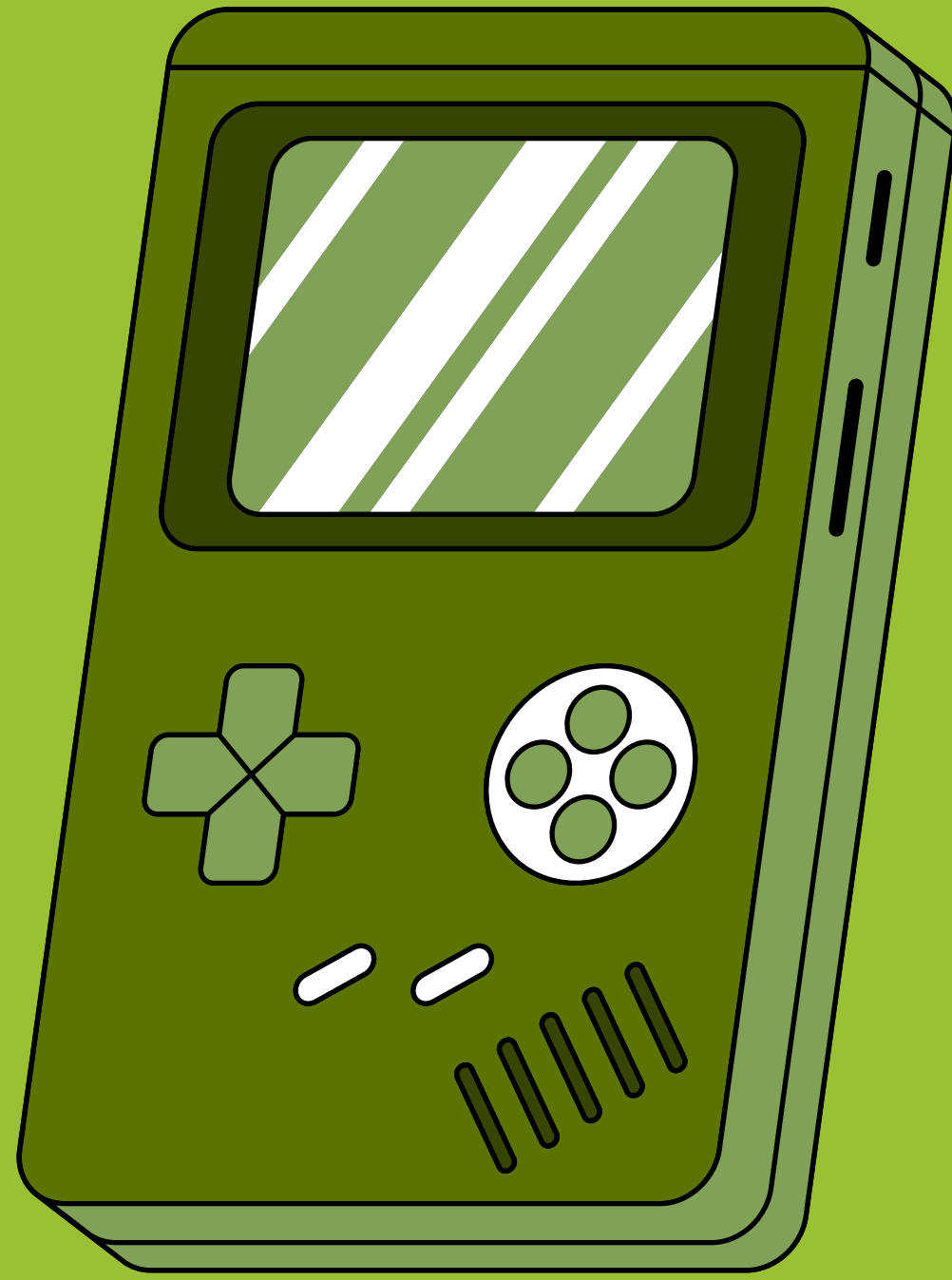


SMALL APPLIANCES

(MICROWAVES, TOASTERS, COFFEE MAKERS)

Proper Disposal Method:

- 1 Contact local waste management authority for proper disposal instructions
- 2 Take to a designated e-waste recycling facility



VIDEO GAME CONSOLES

Proper Disposal Method:

- 1** Return to the manufacturer or retailer for recycling programs
- 2** Donate to local charities or organisations that accept working devices
- 3** Locate an e-waste recycling center near you

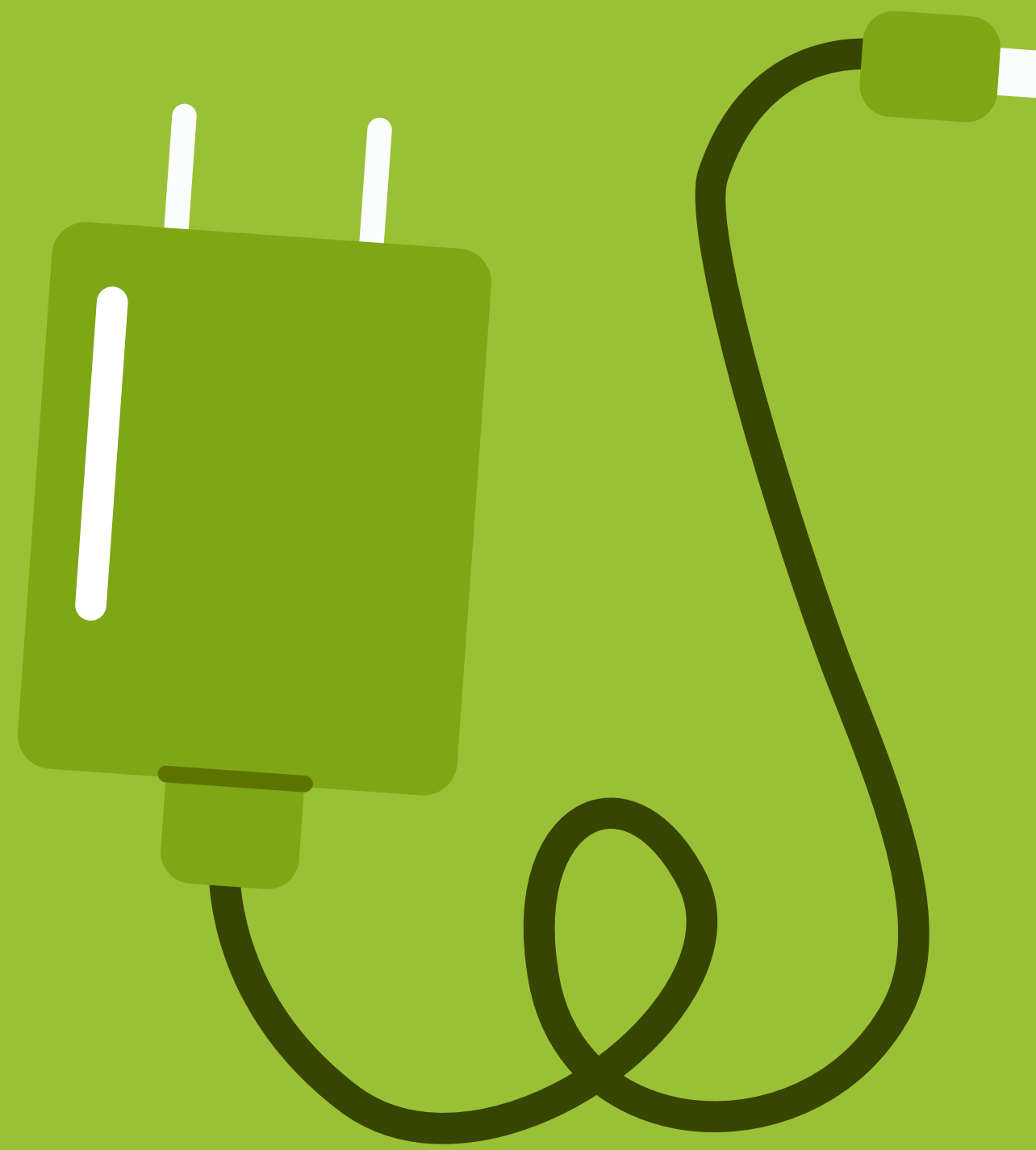


BATTERIES

(RECHARGEABLE AND SINGLE-USE)

Proper Disposal Method:

- 1** Take to designated battery recycling locations or collection points
- 2** Check with local retailers for take-back programs



CHARGERS CABLES, AND ADAPTERS

Proper Disposal Method:

- 1** Locate an e-waste recycling centre that accepts wires and cables
- 2** Return to the manufacturer or retailer for recycling programs, if applicable

DO'S & DON'T'S OF RECYCLING E-WASTE

DO'S

- ✓ Research local recycling facilities, take-back programs, and events for proper e-waste disposal.
- ✓ Remove personal data from devices before recycling or donating.
- ✓ Repair or refurbish electronic items before disposing of them.
- ✓ Separate e-waste from regular household waste.
- ✓ Remove batteries before recycling.
- ✓ Donate working electronics to charities.
- ✓ Educate yourself and others about e-waste recycling.
- ✓ Look for recycling symbols on electronic products.

DON'TS

- ✗ Throw electronics in the trash or mix with other recyclables.
- ✗ Dismantle or process e-waste at home.
- ✗ Dispose of electronics in a way that leads to illegal dumping or exporting.
- ✗ Hoard old, unused electronics.
- ✗ Ignore local regulations for e-waste disposal.



**ECO
LIVING
VIBES**



CONCLUSION

Remember to recycle your electronic waste responsibly and contribute to a more sustainable future. Always check with your local waste management authority for specific disposal instructions and regulations in your area.

Find more insights, infographics, tips, advice and practical guides at www.ecolivingvibes.com